



Renovation and New Build Noise Control Issues

dB Consultation Ltd
E-mail: info@dbc-ltd.co.uk

Tel: (01206) 386800

Fax: (01206) 386888

Website: www.dbc-ltd.co.uk

- Are you thinking about moving into property development?
- Are you an existing property developer?
- Do you just want to try it once?

If the answer to any of these was "YES" then read on....

There are strict guidelines stated in **Approved Document E** of the **Building Regulations**, stipulating the levels of allowable levels for noise transfer from one dwelling to another. These guidelines are used for both **New Build** as well as **Renovation** developments, but the levels are different.

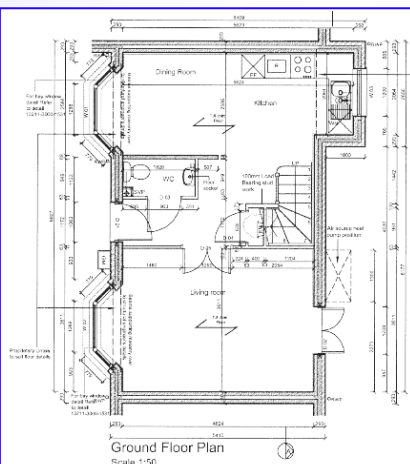
As with all things, cost is a major factor. It's always better to make sure that the materials will be right for the job, so you only do things once. It's important to ensure that in the architectural stage, the correct parts are being specified.

For a lot of larger developers there are standard detail systems available, which provide tried and tested levels of sound insulation. All developments need to have **"Pre-Completion Testing"** carried out on the development before the property is habitable.

How can we help you?

At dB Consultation Ltd, we offer a complete service covering architectural sound insulation advice, testing for noise break out, best build techniques throughout construction, EPC calculations and air tightness testing, through to pre-completion testing and sign off.

All testing is carried out to the relevant BS, EN and ISO standards, with "UKAS" calibrated equipment.



dB Consultation Ltd,

Calbron House, Unit 7 Rushmere Close, West Mersea, Colchester, Essex, CO5 8QQ.